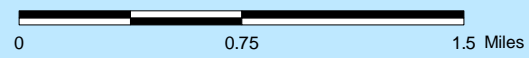
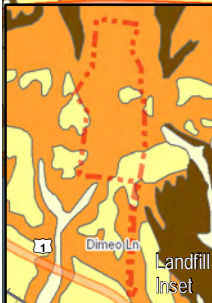
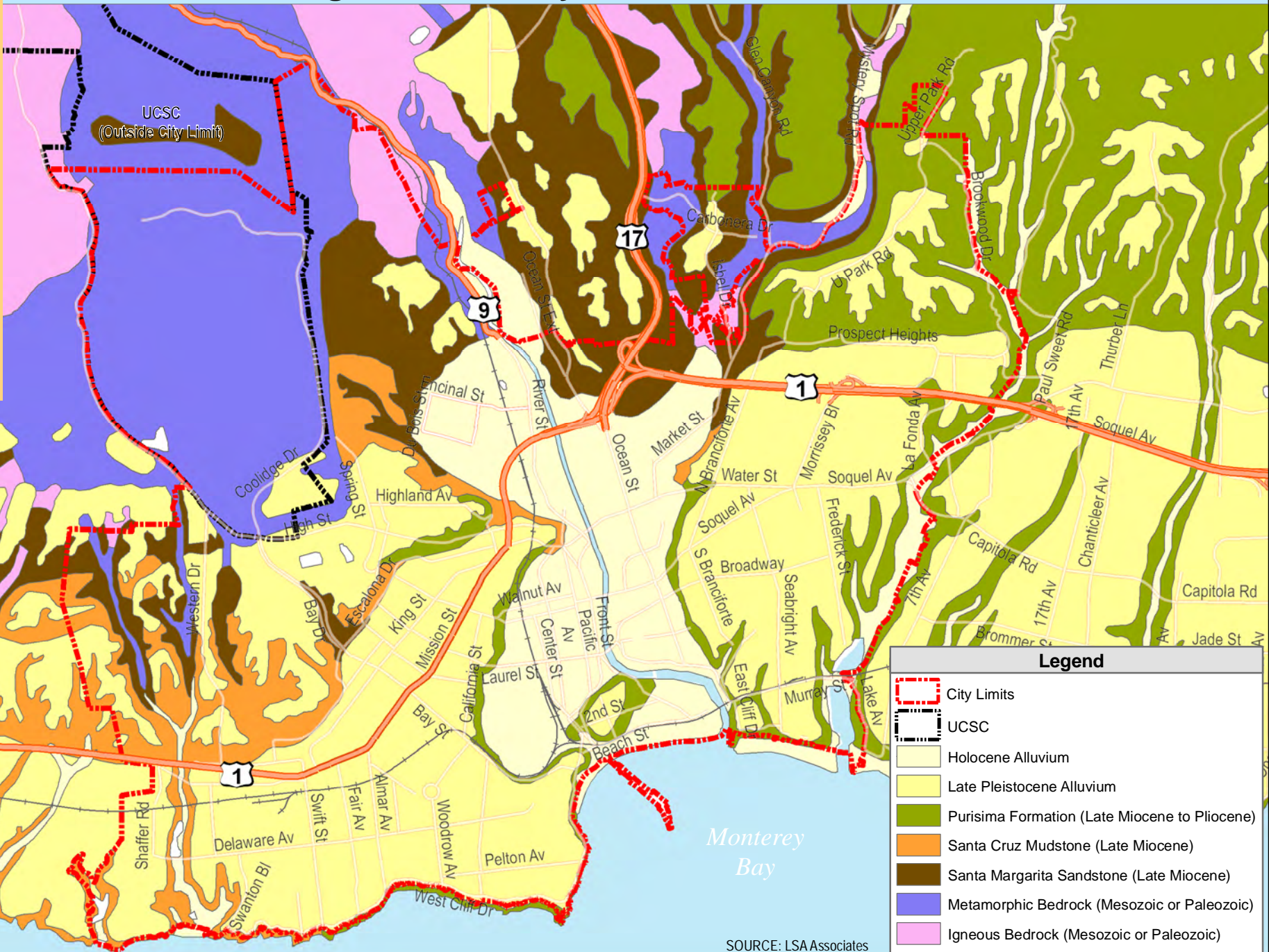




Figure 4.9-5 Areas of Paleontological Sensitivity



SANTA CRUZ
General Plan 2030
DRAFT EIR



Legend	
	City Limits
	UCSC
	Holocene Alluvium
	Late Pleistocene Alluvium
	Purisima Formation (Late Miocene to Pliocene)
	Santa Cruz Mudstone (Late Miocene)
	Santa Margarita Sandstone (Late Miocene)
	Metamorphic Bedrock (Mesozoic or Paleozoic)
	Igneous Bedrock (Mesozoic or Paleozoic)

SOURCE: LSA Associates