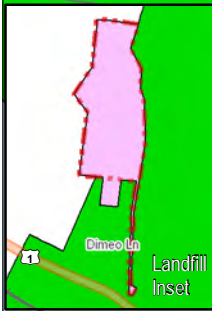
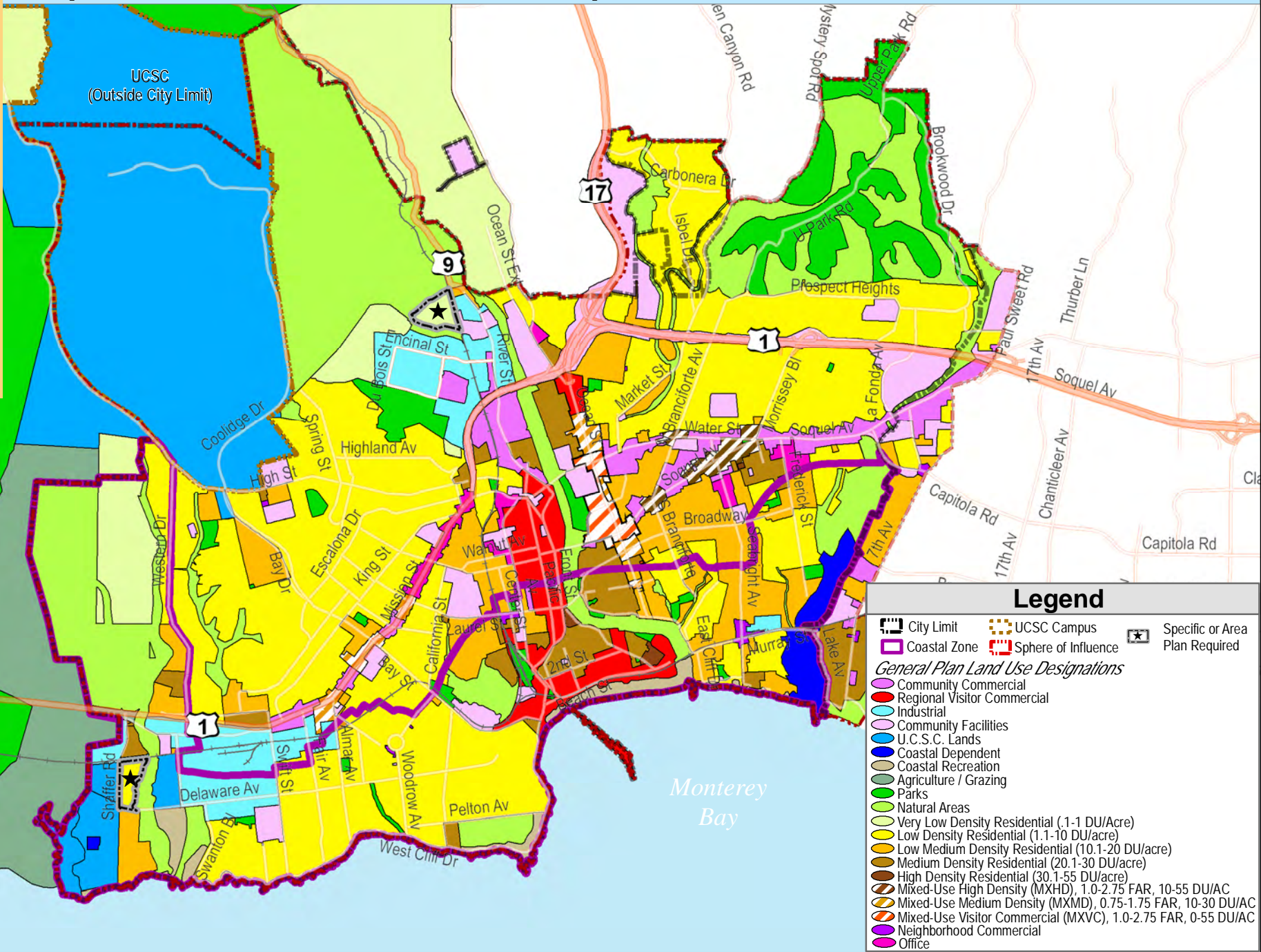




**Figure 2.2**  
**Proposed General Plan Land Use Map**



SANTA CRUZ  
General Plan 2030  
DRAFT EIR



**Legend**

- City Limit
  - UCSC Campus
  - Coastal Zone
  - Sphere of Influence
  - Specific or Area Plan Required
- General Plan Land Use Designations*
- Community Commercial
  - Regional Visitor Commercial
  - Industrial
  - Community Facilities
  - U.C.S.C. Lands
  - Coastal Dependent
  - Coastal Recreation
  - Agriculture / Grazing
  - Parks
  - Natural Areas
  - Very Low Density Residential (1.1-1 DU/Acre)
  - Low Density Residential (1.1-10 DU/acre)
  - Low Medium Density Residential (10.1-20 DU/acre)
  - Medium Density Residential (20.1-30 DU/acre)
  - High Density Residential (30.1-55 DU/acre)
  - Mixed-Use High Density (MXHD), 1.0-2.75 FAR, 10-55 DU/AC
  - Mixed-Use Medium Density (MXMD), 0.75-1.75 FAR, 10-30 DU/AC
  - Mixed-Use Visitor Commercial (MXVC), 1.0-2.75 FAR, 0-55 DU/AC
  - Neighborhood Commercial
  - Office