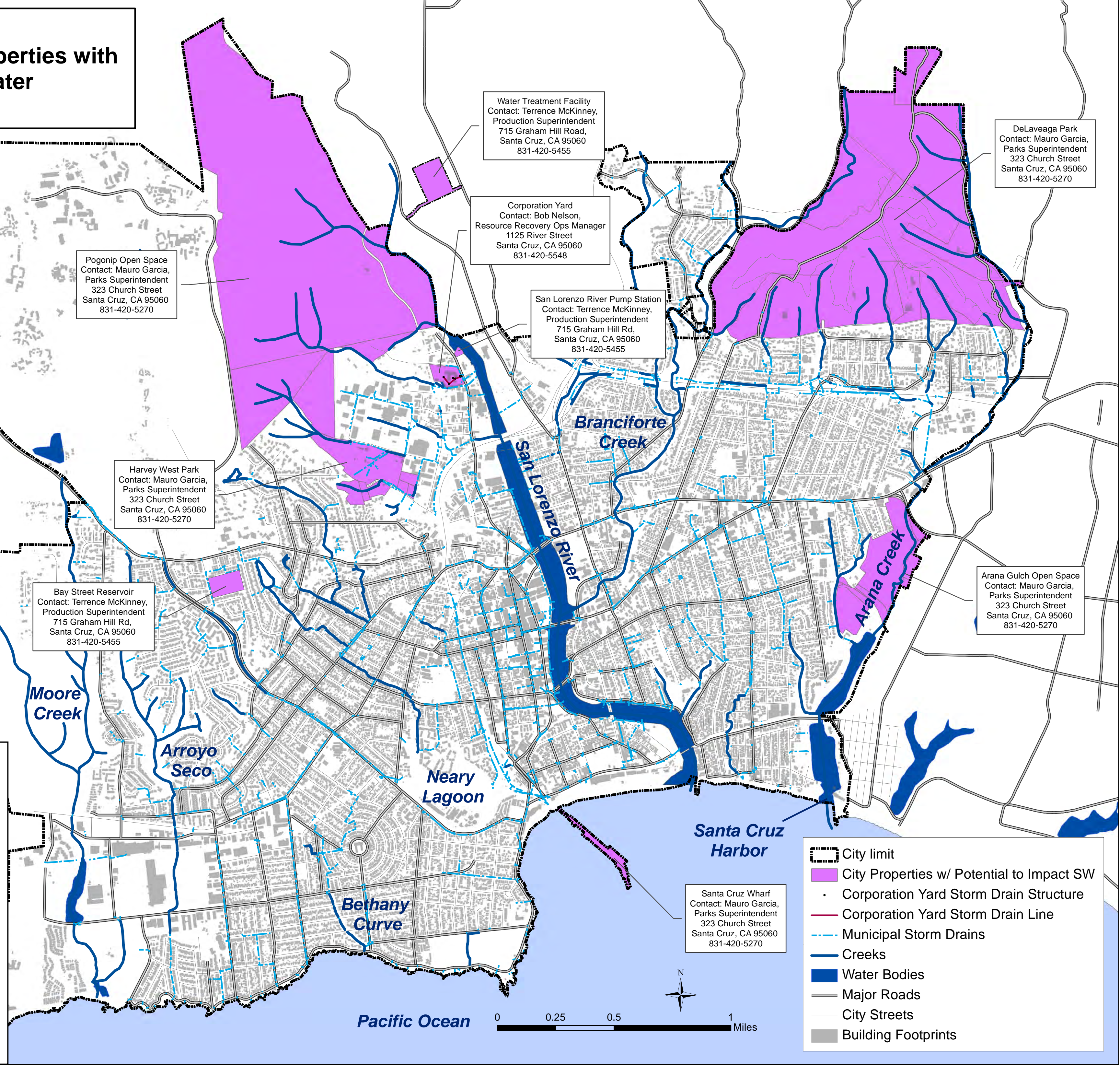


**City of Santa Cruz
Inventory of City-owned Properties with
Potential to Impact Storm Water
June 2015**



Pogonip Open Space
Contact: Mauro Garcia,
Parks Superintendent
323 Church Street
Santa Cruz, CA 95060
831-420-5270

Water Treatment Facility
Contact: Terrence McKinney,
Production Superintendent
715 Graham Hill Road,
Santa Cruz, CA 95060
831-420-5455

DeLaveaga Park
Contact: Mauro Garcia,
Parks Superintendent
323 Church Street
Santa Cruz, CA 95060
831-420-5270

Corporation Yard
Contact: Bob Nelson,
Resource Recovery Ops Manager
1125 River Street
Santa Cruz, CA 95060
831-420-5548

San Lorenzo River Pump Station
Contact: Terrence McKinney,
Production Superintendent
715 Graham Hill Rd,
Santa Cruz, CA 95060
831-420-5455

Harvey West Park
Contact: Mauro Garcia,
Parks Superintendent
323 Church Street
Santa Cruz, CA 95060
831-420-5270

Bay Street Reservoir
Contact: Terrence McKinney,
Production Superintendent
715 Graham Hill Rd,
Santa Cruz, CA 95060
831-420-5455

Arana Gulch Open Space
Contact: Mauro Garcia,
Parks Superintendent
323 Church Street
Santa Cruz, CA 95060
831-420-5270

Santa Cruz Wharf
Contact: Mauro Garcia,
Parks Superintendent
323 Church Street
Santa Cruz, CA 95060
831-420-5270

City facilities that are already covered
by a separate State Storm Water
Permit are not included on this map.
These facilities include:

City of Santa Cruz Landfill
Permit Type: Industrial General Permit,
WDID #3 44I003057

City of Santa Cruz Waste Water
Treatment Facility
Permit Type: Waste Discharge Reqs
Order No. R3-2010-0043
NPDES Permit No. CA0048194

- City limit
- City Properties w/ Potential to Impact SW
- Corporation Yard Storm Drain Structure
- Corporation Yard Storm Drain Line
- Municipal Storm Drains
- Creeks
- Water Bodies
- Major Roads
- City Streets
- Building Footprints

