



## THE COST OF "FREE" STUFF

Sidewalks can be a vibrant place with people coming and going and all kinds of activity. Some activities are appropriate while others aren't in keeping with the overall goals of unhindered passage and litter-free streets.

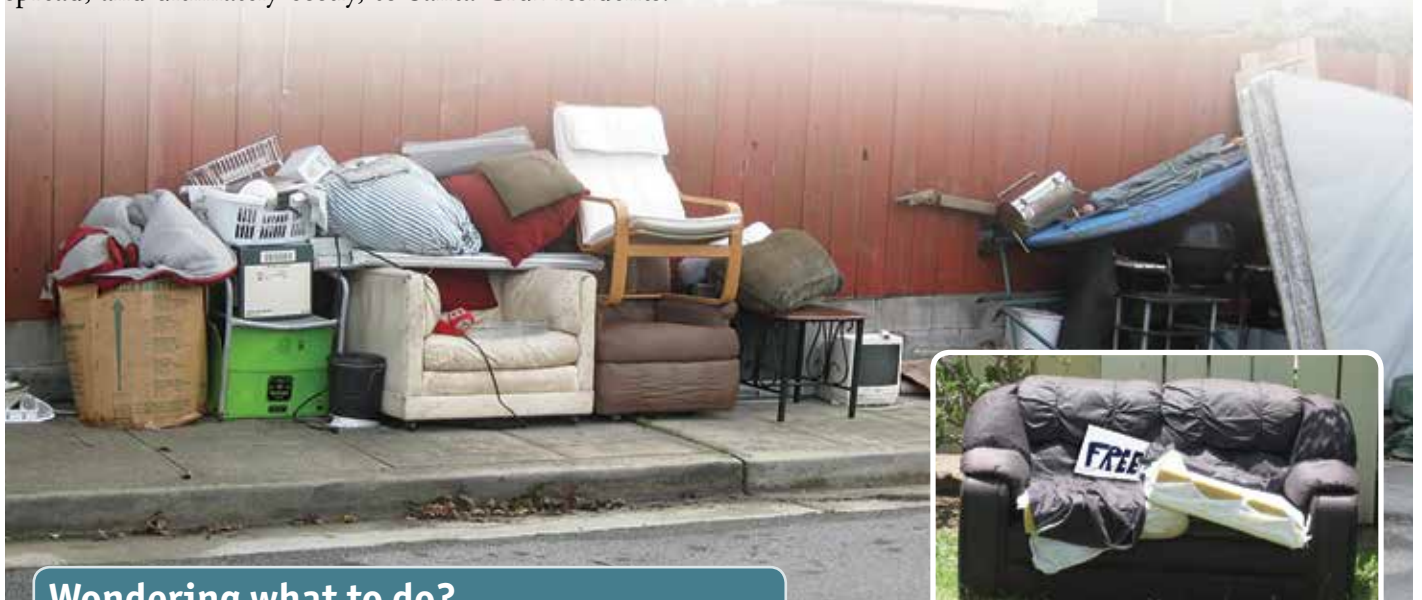
Often we see garage sales that spill onto the sidewalk. After the sale, those treasures of yesterday become today's box of junk left out in hopes that it will just disappear. Then people rummage through the boxes leaving debris everywhere. Couches with "FREE" signs start out on a front lawn and mysteriously "migrate" down the street where past ownership becomes foggy and the responsibility of disposal becomes someone else's problem. But that problem is becoming more widespread, and ultimately costly, to Santa Cruz residents.



"Unfortunately, we're seeing more and more "FREE" stuff left on sidewalks and forgotten," said Resource Recovery Supervisor Lee Farola.

City crews haul away improperly discarded items up to ten times a day! This extra work costs staff time, vehicle upkeep, gas, and disposal costs which can lead to higher refuse rates for residents.

Our streets and sidewalks are the backbone of our transportation system and that system moves people. Skateboarders, bicyclers, walkers and those with disabilities need to be able to move, unhindered, down our thoroughfares—let's keep them clean and open so that we can all get where we're going safely!



### Wondering what to do?

**Stop it!** – Don't leave "Free" items out on the sidewalk. Encourage your neighbors to utilize the following curbside alternatives as well.

**Bulky Item Pick Up!** – Call customer service 420-5220. Use the Free Tags enclosed.

**Find a Taker!** – FreeCycle, Next Door and Craigslist Free are all great and free online options to connect your items with someone who actually wants them.

**Donate it!** – Useable and items in good condition only. Your junk is not necessarily their treasure.

## WE'RE HERE TO HELP!

City employees utilize spot checks of curbside recycling carts and containers as an opportunity to educate residents and businesses about contamination. If unacceptable items are found, customers will receive an orange notification sticker on their cart. A follow up letter, and a **Keep It Simple – Keep It Clean Recycle Right!** guide will also be mailed out to help them improve their understanding and sorting of what goes where.

The City provides ample opportunity to clean up the recycling bin or cart but if a third warning is issued, a contamination fee of up to \$30 will be applied to the utility account. If contamination continues, the blue cart may be removed and the customer will need to move to a larger level of garbage service, which will cost more.

Craig Pearson, Superintendent of Waste Disposal, believes that utilizing the many educational resources available in the website, [cityofsantacruz.com/recycle/right](http://cityofsantacruz.com/recycle/right) will result in benefits right away. *“We want to keep recycling out of the garbage, and garbage out of the recycling. Improved efficiencies, cleaner recycling and less labor costs will result.”*

City crews check carts for contamination.



## Why Doesn't the City Accept Cartons or Clam Shells?

### 1. Small Quantity of Material:

Cartons represent a relatively small percentage of our overall waste stream. It would take us months to acquire enough cartons to bale and ship out.

### 2. Mixed Material:

Gable top milk and shelf-stable aseptic cartons contain multiple layers of material including paper, aluminum (aseptic) and plastic, making them difficult to recycle.

### 3. Limited Viable End Market:

Demand for hard to recycle cartons as a feedstock for new items has been low. That may change in the future as things do in the world of recycling. For now, cartons belong in your trash cart

**To-Go food containers** – Clear light-weight, plastic boxes known as “clamshells” that hold

produce, take-out food, deli salads, roasted chickens, baked goods and more are not accepted with recycling. They are difficult to sort and because they easily flatten, they contaminate other materials. Like cartons, there is currently no viable market for this type of plastic so even if it has a number in a recycle symbol, it goes in the trash.



Stopping the sorting line for bagged materials or needles costs time and money.

## KEEP IT LOOSE!

When you place your recycling in the blue cart, it should be loose.

Do not place items in a bag!



# FREE SERVICE TAGS & DISPOSAL COUPON

## FOUR FREE SERVICE TAGS

are enclosed for you to use when you have more refuse than your cart can hold. Use these tags on collection day before December 31, 2020. They may come in handy following a special occasion like a party or spring-cleaning!



**YARD WASTE OPTION:** Use one tag for free drop-off of yard trimmings at the Resource Recovery Facility.

## APPLIANCE/BULKY ITEM OPTION:

- Use Bulky Item Pickup day in June
- Schedule a Tuesday, Wednesday, or Thursday pickup anytime of the year
- Drop off an appliance or bulky item at the Resource Recovery Facility (RRF)

One tag is required for each appliance, one tag for each bulky item with a limit of four tags total per drop-off at the RRF or curbside pickup.

**Proof of City residency is required.**

## Extra Trash Option:

- 1 Place extra refuse in a trash bag — maximum 32 gallons, 40 pounds.
- 2 Open refuse cart lid, **place extra bag on top**, close lid over bag to hold in place.
- 3 Attach tag to the outside of the bag, facing the street.
- 4 Only one tag may be used per week.



## ONE FREE DISPOSAL COUPON

Use your disposal coupon at the Resource Recovery Facility for free disposal of one yard of refuse.

See coupon below for details.



## ADDITIONAL SERVICE

Additional curbside service may be scheduled, for a fee, by calling Customer Service 420-5220.

# SECURE YOUR LOAD FOR SAFER ROADS! ITS THE LAW!

Have you ever been driving behind a truck with an uncovered load, anxiously waiting to dodge something that might fly off the back at any moment? If so, you're not alone and your concern is very real. Malcolm Dougherty, the Director of Caltrans considers unsecured loads to be a safety, environmental, economic, and aesthetic issue that is 100% preventable.

Aside from costing millions in cleanup, personal costs can also add up. California vehicle codes 23114 and 23115 require any vehicles transporting any type of cargo to be totally covered or secured, so that the load or any part of the load won't spill, fall or otherwise escape from the vehicle.



Must be used by December 31,

**2020**

**FREE COUPON for 1 yard of REFUSE Disposal**  
at the City of Santa Cruz Resource Recovery Facility  
(605 Dimeo Lane, 3 miles north on Highway 1)

- Drop-off one yard of refuse.
- Present disposal coupon at the City Resource Recovery Facility.
- Bring a driver's license and recent City utility bill as proof of City residency.
- Loads must be tarped.

*(Non-transferable – not for commercial use)*  
City of Santa Cruz • Public Works Department – 420-5220

Violations for litter include fines of up to \$1,000 for the first offense and if an item falls off a vehicle and causes bodily harm, the driver faces gross misdemeanor charges, penalties of up to \$5,000 and up to a year in prison. Uncovered loads can also cost you more at disposal facilities; potentially doubling the disposal fee you would normally pay. ***Rather than risk it, tarp it!***

# THESE ITEMS ARE **NOT** ACCEPTED AT THE CURBSIDE!

These items require special handling due to size and material.

Please bring these items to the **Resource & Recovery Center (Recycling Center)** on Dimeo Lane so that they don't end up in our Landfill!

## Automobile:



Tires, anti-freeze, transmission fluid, auto batteries, **used motor oil** (call 831-420-5220 to request a free, 2 1/2 gallon container).

## Scrap Metal:



Large appliances, furniture, motors, engines and transmissions (must be drained of all fluids).

## Household batteries:



(AAA, AA, C, D, 9-volt, button cell and lithium ion).

## E-Waste:



Computers and monitor, Televisions and stereos, small electronics and appliances.

## Fluorescent light bulbs & tubes:



Limit 10 per visit.

## Rigid Plastic:



5 gallon buckets, laundry baskets, storage tubs, plastic garden pots and trays and lawn furniture.

## Shredded Paper:



Contained in a brown paper bag.

## Carpet:



Must be separate from padding, clear of tack strips, nails, and other debris.

## Resource Recovery Facility (Landfill, Yard Waste, & Recycling)

**Hours:** Mon. – Sat. 7:30 AM to 3:30 PM

Closed on Sundays, Thanksgiving Day, Christmas Day and New Year's Day. Closed at noon on December 24 (Christmas Eve) and December 31 (New Year's Eve).

**Location:** 605 Dimeo Lane

(3 miles north of Santa Cruz up Highway 1).

## Need More Information?

Customer Service .....	420-5220
Resource Recovery Facility. ....	420-6270
Household Hazardous Waste Disposal .....	454-2606
Recycling Tip Line .....	420-LESS

